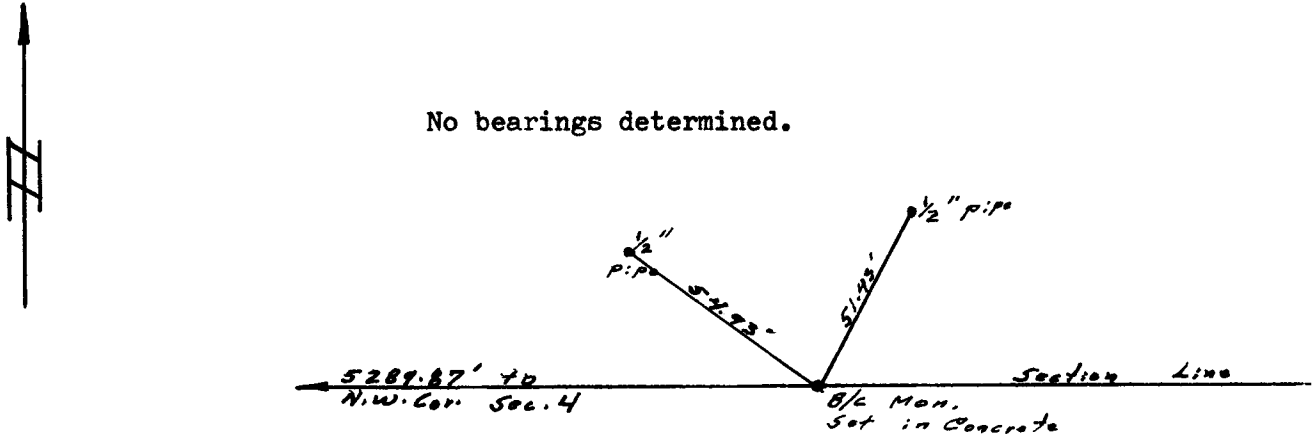


CERTIFIED LAND CORNER RECORDATION

LOCATION <u>33</u> <u>34</u> T 20 N <u>4</u> <u>3</u> T 19 N R 66 W 6th P.M.	DESCRIPTION OF CORNER EVIDENCE FOUND, AND ORIGINAL RECORD (If known) Nothing found at corner. Corner re-established by single proportion. G.L.O. record - sandstone 22" x 14" x 2".
--	--

DESCRIPTION OF MONUMENT AND ACCESSORIES ESTABLISHED TO PERPETUATE THE ORIGINAL LOCATION OF THIS CORNER:
 Set 3" brass cap on 2" pipe, 30" long, set in concrete. Stamped as shown under location, plus LS 495.
 pipe
 Set 1/2" for witness corners to northeast and northwest.
 See sketch.

SKETCH, WITH COURSE AND DISTANCE TO ADJACENT CORNER IF DETERMINED IN THIS SURVEY.
 (May Sketch or Paste Reproduction on Reverse Side.)



No bearings determined.

I, Robert C. Corbet certify that I have carefully performed or reviewed the work done on the diagrammed corner as reported on this recordation form and approve the same.

Robert C. Corbet LS 495
 Signature of Surveyor Registration No.

STATE OF WYOMING,
 Office of Clerk and Recorder,
 County of Saramie

This "corner record" was filed for record on the 6 day of January, 1975, was noted on the cross-index plat and is assigned page No. _____, in book No. _____.

James C. Whitehead
 County Official

Cross Index No. <u>A-13</u>	T. <u>19</u>	R. <u>66</u>	<u>6</u> Mer.
_____	T. _____	R. _____	Mer.
_____	T. _____	R. _____	Mer.
_____	T. _____	R. _____	Mer.
_____	T. _____	R. _____	Mer.
_____	T. _____	R. _____	Mer.
_____	T. _____	R. _____	Mer.